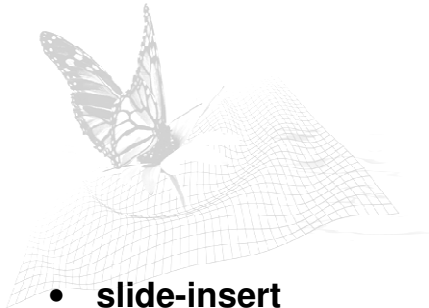


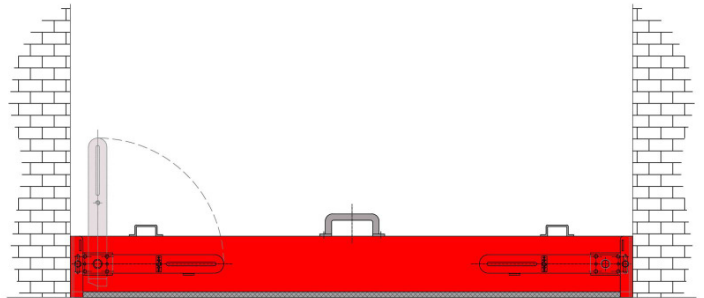
Retention Barrier BL/BTL

Article index: 014

BTL: doorway barrier



- **slide-insert**
- **ideal where space is a problem**
- **preferred doorway installation**



Dimensions:

Standard height	100–350 mm
Standard length	750–6000 mm
Special situations	available on request
Width	50 mm

The BL/BTL spill barrier is the **ideal solution wherever space is extremely restricted**. The U-shaped mounting fixtures are very narrow and also adapt optimally to industrial frames. Since the barrier has no protruding parts and offers maximum security while requiring a minimum of space, it is **especially recommended for escape-door areas**.

In an emergency, the barrier body is inserted into the mounting fixtures and locked into position in the guide rails with the aid of two tensioning levers. The level of compression is adjustable, which guarantees that the barrier is tightly sealed against the mounting fixtures and the ground. The tensioning levers are horizontally positioned on the inserted barrier and secured into place.

The barrier body is stored on space-saving wall brackets mounted close to the opening

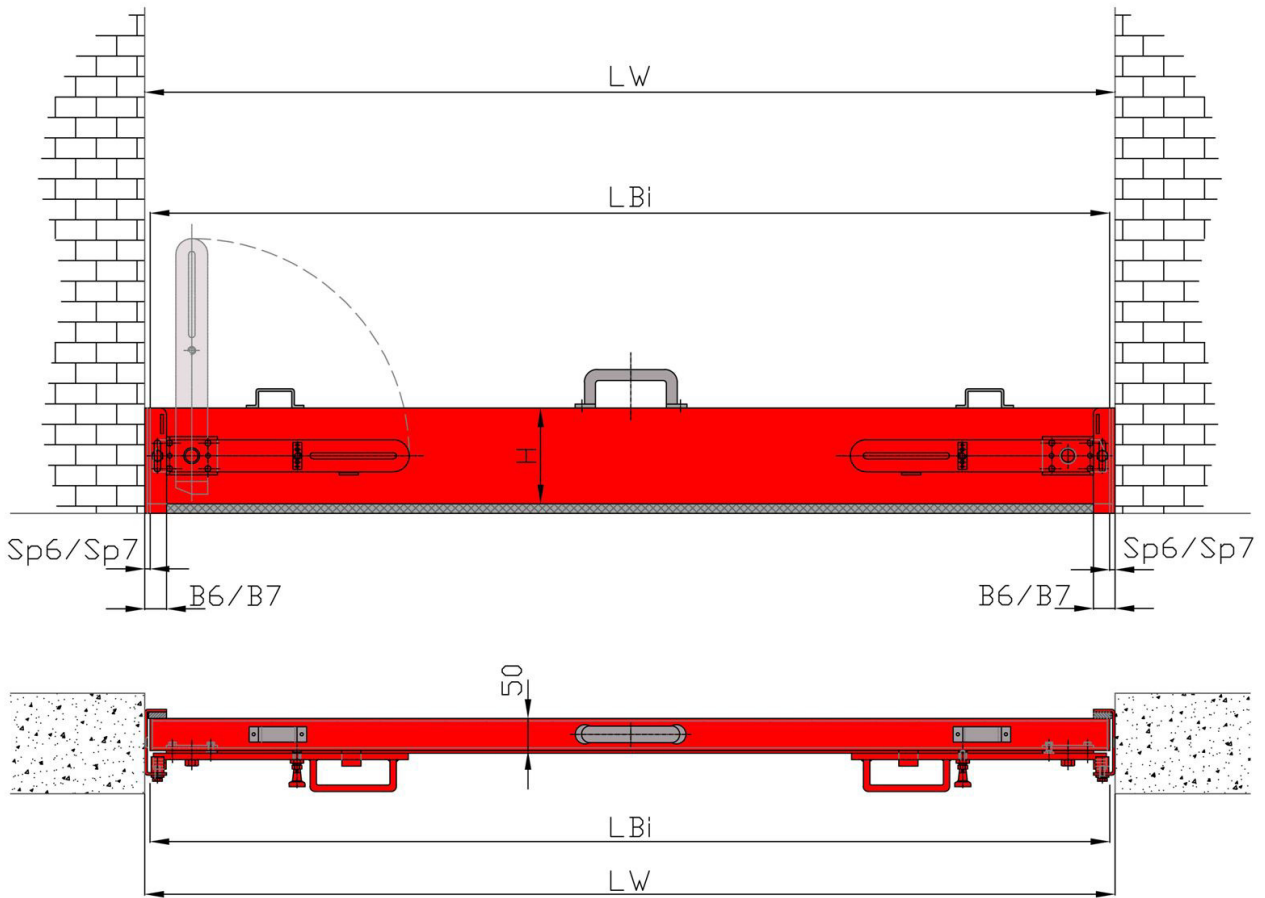
that needs protecting. The wall brackets are part of the product package.

The retention barrier is a hollow aluminium profile body. **For retention heights of more than 300 mm, the individual profiles are generally welded together**. A compressible, highly adaptable special seal has been applied to its underside. The seal is age and media-resistant.

The mounting fixtures and barrier bodies are powder-coated, mainly in RAL 3020 (traffic red). The remaining metal components are either galvanised or made of aluminium.

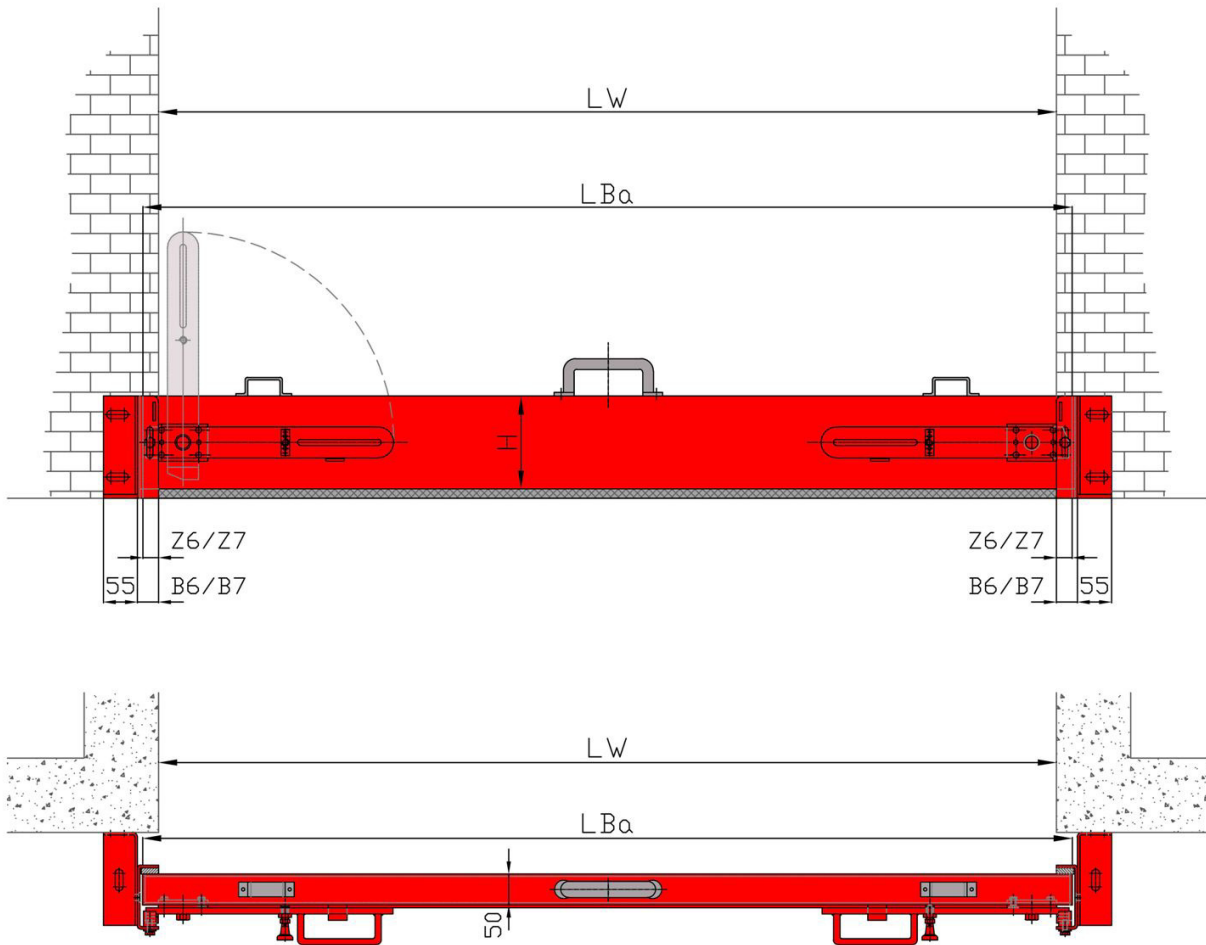
Suitable for crack-free surfaces with minimal ground unevenness – such as concrete, DIN 59220 chequered plate, tiles and stone.

Installation inside a doorway or gate



BL/BTL (door opening, slide-insert)			
Measurement table for order size LBi (LBi = length of barrier inside the opening)			
<p>Mounting fixture B6/35</p>	Height H [mm]	B6/35	B7/50
	100	LWi [mm] up to 2500	LWi [mm] more than 2500
	150		
	200		
	250		
	300		
	350		
<p>Mounting fixture B7/50</p>		B6 = 35 mm	B7 = 50 mm
		$LBi = LW - (2 \times Sp_6)$	$LBi = LW - (2 \times Sp_7)$
		$Sp_6 = 10 \text{ mm}$	$p_7 = 15 \text{ mm}$

Installation outside a doorway or gate



BL/BTL (door opening, slide-insert)			
Measurement table for order size LBa (LBa = length of barrier outside the opening)			
Mounting fixture B6/35 		B6/35	B7/50
	Height H [mm]	LW [mm] up to 2500	LW [mm] more than 2500
	100		
	150		
	200		
	250		
300			
350			
Mounting fixture B7/50 		B6 = 35 mm	B7 = 50 mm
		$LBa = LW + (2 \times Z_6)$	$LBa = LW + (2 \times Z_7)$
		$Z_6 = 25 \text{ mm}$	$Z_7 = 40 \text{ mm}$